

## NEWS RELEASE

### FOR IMMEDIATE RELEASE:

Oct. 6, 2020

### CONTACT:

Nancy Nydam  
404-657-2462

## DPH Provides Update on COVID-19 Trends in Georgia

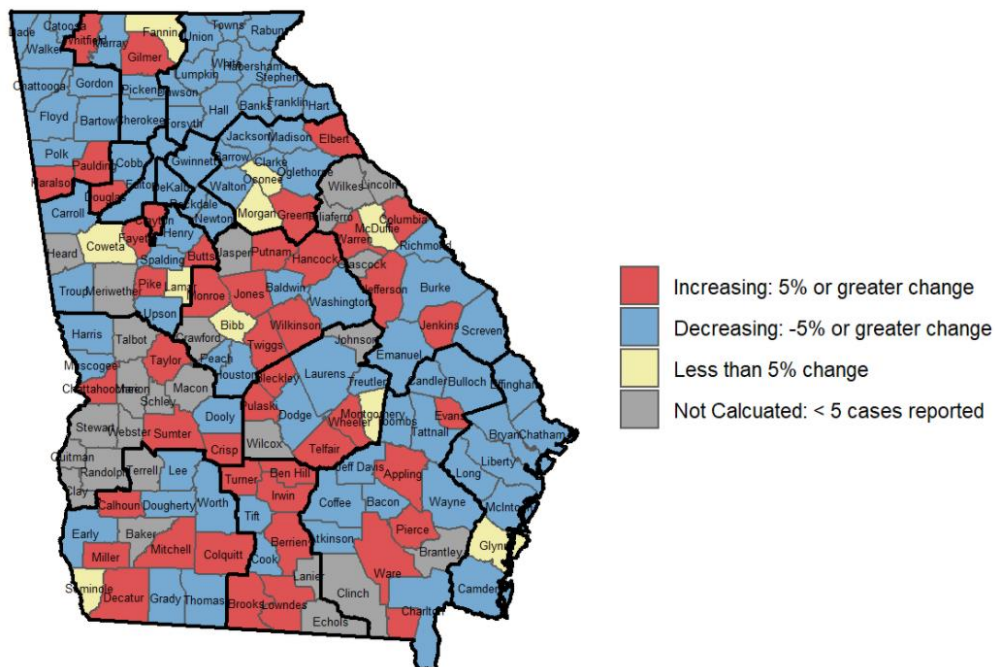
**Atlanta** – The Georgia Department of Public Health (DPH) is providing the following information regarding the fight against COVID-19 in Georgia:

### COVID-19 Cases

- From **9/29 to 10/05**, the seven-day average of new cases reported **increased 3.4%**.
- The seven-day average of new cases reported is **down 67%** from our peak July 24.
- As of Oct. 5, there are **323,714 confirmed cases of COVID-19 and approximately 21,348 probable cases of COVID-19**, most identified through antigen testing. (A probable case meets at least one of the following criteria: has a positive antigen test on a respiratory specimen; OR has not had a confirmatory COVID-19 test but has symptoms compatible with COVID-19 AND a known exposure to a COVID-19 case; OR the individual has died and the death certificate lists COVID-19 disease or SARS-CoV-2 as an underlying cause of death or a significant condition contributing to death.)

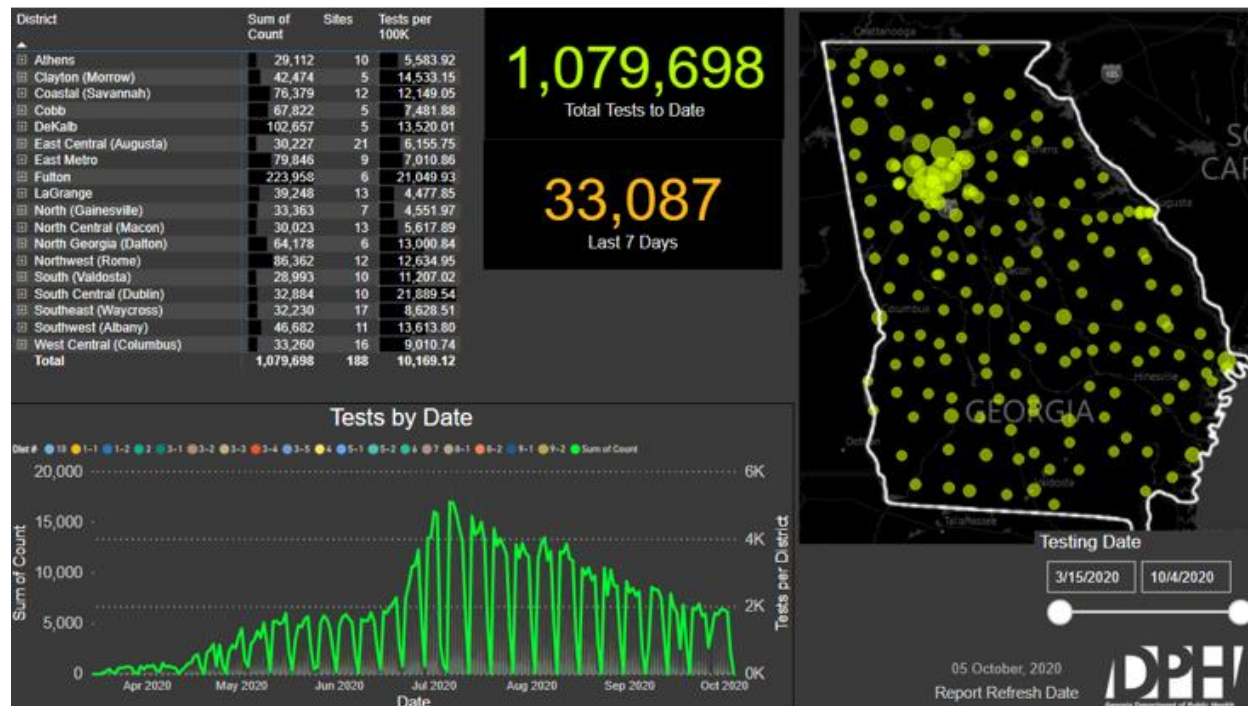
### Confirmed COVID-19 Cases

Percent Change 09/19-09/25, 09/26-10/02



## COVID-19 Testing

### Georgia SPOCs



- As of Oct. 5, the state reported 3,03,757 (cumulative) COVID-19, tests reported to DPH through Electronic Laboratory Reports (ELR).
- The number of specimens collected at DPH SPOCs is **1,079,698**
- DPH is operating 188 SPOCs, including mobile and pop-up locations statewide.

The Georgia Department of Public Health (DPH) has received the first shipment of Abbott BinaxNOW Rapid COVID-19 Tests. The initial distribution contains 207,000 of the antigen tests, but Georgia is slated to receive 3 million tests by the end of the year. These first tests will be distributed to public health districts statewide for use in schools, colleges and universities, among first responders and other critical areas of need in communities statewide.

### Positivity Rate

The statewide percent positivity (7-day moving average) for PCR tests increased from 6.3% on 9/28/20 to **7% on 10/05/20**.

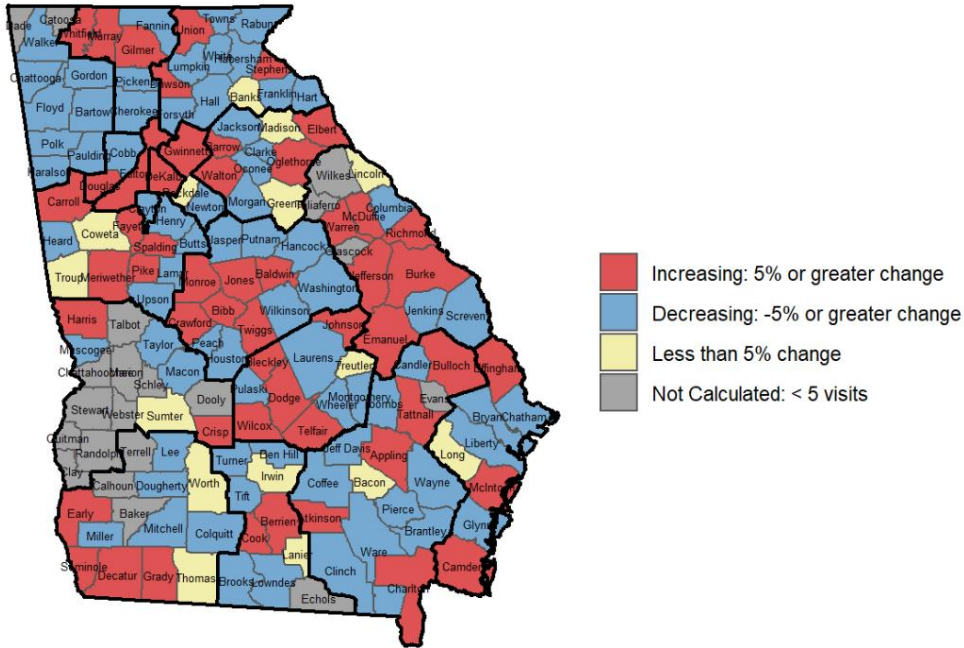
### Hospitalizations

Daily hospitalizations for COVID-19 have decreased from 1,317 on Sept. 28 to 1,271 on Oct. 5, or a decrease of 3.5% in the past week. Hospitalizations have decreased **60%** since a daily high of 3,200 on July 30.

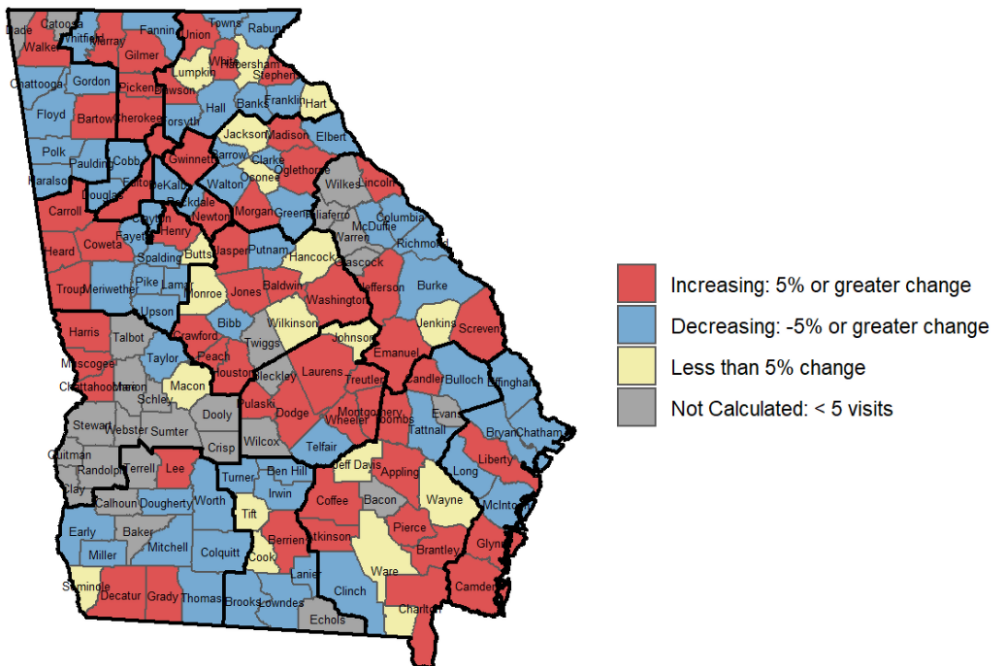
### Emergency Department Visits

Emergency Department (ED) visits related to COVID-19 and ILI (influenza-like illness) have remained flat over the two week period Sept. 19- Oct. 2.

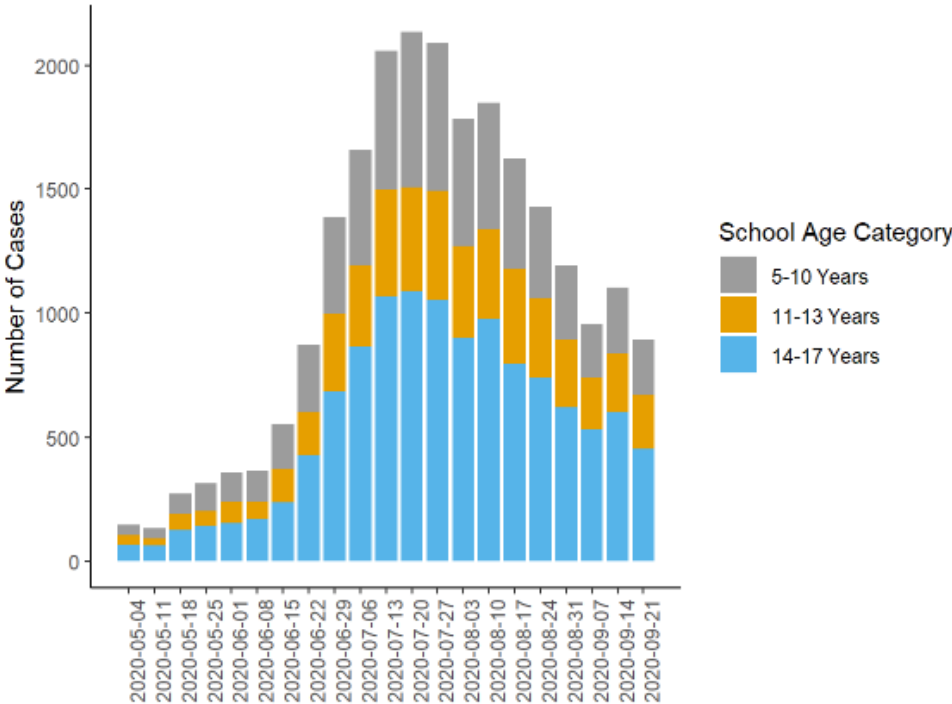
Emergency Department (ED) Visits with COVID-19 Syndrome  
Percent Change 09/19-09/25, 09/26-10/02



Emergency Department (ED) Visits with ILI Syndrome  
Percent Change 09/19-09/25, 09/26-10/02

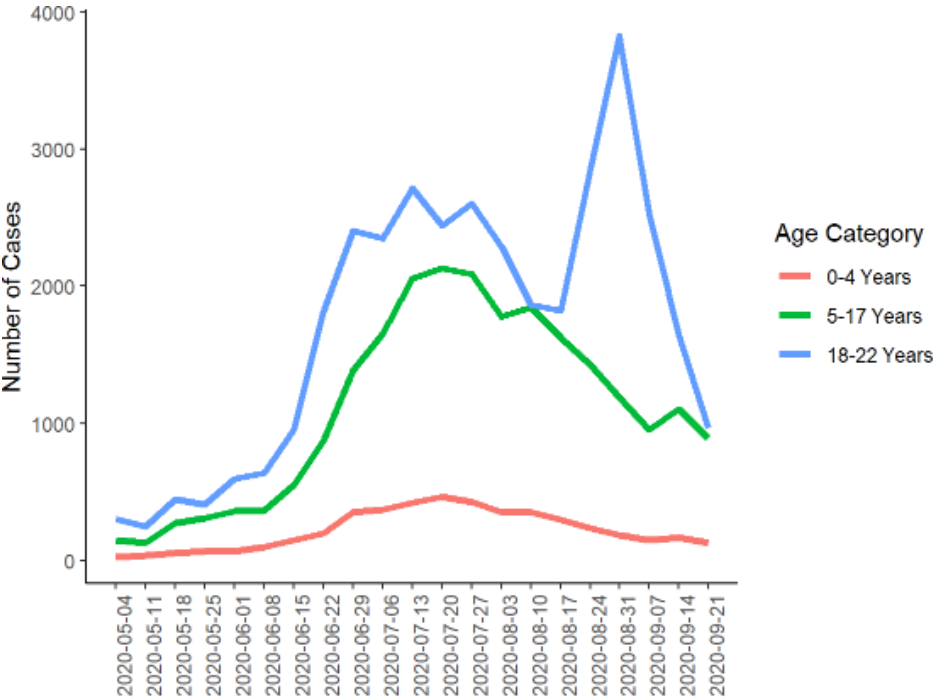


**COVID-19 Cases Among K-12 School Aged Children\***



\*Report reflects Sept. 21-26

**COVID-19 Cases by Age Category (Ages 0-22)\***



\*Report reflects week of Sept. 21-26

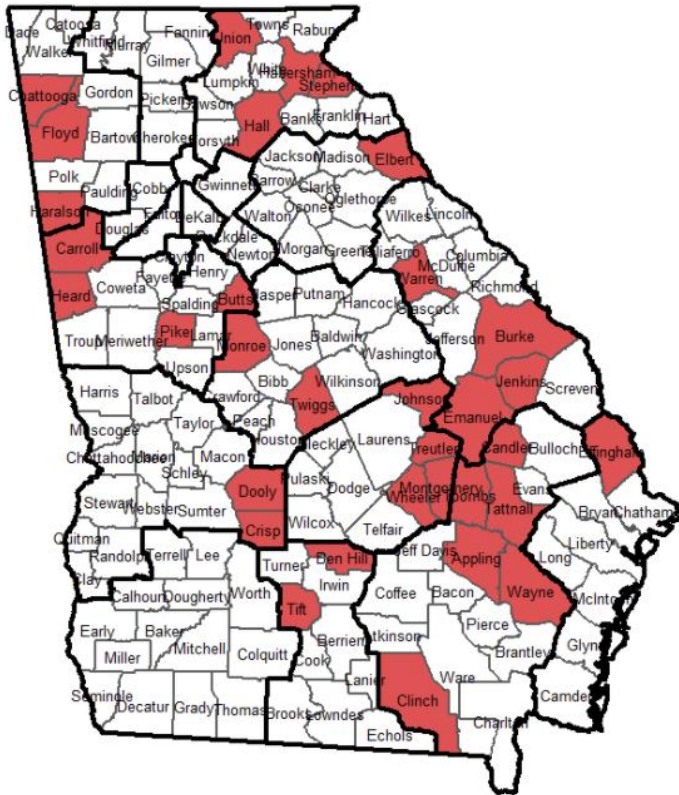
## Outbreaks

Sept. 27- Oct. 3: **70**

These outbreaks are occurring in settings where people are physically congregating and underscore the need for physical distancing and source control. The highest number of outbreaks occurred in schools, long-term care facilities, correctional facilities and workplaces.

Setting	9/27-10/3	Change from Previous Week	Cumulative Total
LONG-TERM CARE FACILITY/NURSING HOME	11	-6	750
SCHOOL	17	-11	330
PRISON/JAIL	4	-6	227
WORKPLACE	10	-8	226
MANUFACTURING FACILITY	6	n/c	169
RESTAURANT OR DELI	4	+2	88
CHURCH/TEMPLE	1	-3	81
OTHER CONGREGATE SETTING	3	-1	75
DAY CARE CENTER	4	+1	68
OTHER	4	+1	65
HOSPITAL	4	n/c	63
FOOD PRODUCTION FACILITY			53
OFFICE SETTING	1	-2	41
OUTPATIENT (NON-DIALYSIS)			40
SHELTER	1	n/c	39
GROCERY STORE			28
OTHER INPATIENT FACILITY/DETOX FACILITY			27
FARM			19
CONSTRUCTION SITE			17
MENTAL HOSPITAL			17
BAR/ENTERTAINMENT VENUE			13
FUNERAL			11
CAMP			9
HOTEL			9
MILITARY FACILITY			7
DIALYSIS CENTER			6
COMMUNITY			5
WEDDING RECEPTION			5
PRIVATE HOME			4
RESORT			3
CONVENTION CENTER			1
PICNIC/COOKOUT/POTLUCK			1
SWIMMING POOL			1
UNKNOWN			1
WATER PARK			1
WORKPLACE CAFETERIA			1

### Counties with High Transmission Indicators\*



Counties of High Transmission Indicators represent Counties with [14-day cases rate is > 100 cases/100,000 county residents (> 5 cases during this period)] AND [14-day average % positive PCR tests > 10% (> 20 total tests performed during this period)].

\*By county of residence, report reflects Sept. 19 – Oct. 2

For updates on COVID-19, follow @GaDPH and @GovKemp on Twitter and @GaDPH and @GovKemp on Facebook.

For information about COVID-19, visit <https://dph.georgia.gov/novelcoronavirus> or <https://www.cdc.gov/coronavirus/2019-ncov/index.html>.

###